



CLEANROOM CLEANING SOLUTIONS

ENGINEERED FOR CONTROLLED AND VALIDATED PERFORMANCE



cleanroom@elis.com

elis.com

follow us:

REACH OUT:
YOUR SOLUTION IS JUST
A CALL OR CLICK AWAY!



©2/2025 - Reproduction prohibited. External use of photos and reproduction of the document not allowed - EUS-SERVICBS - French simplified joint-stock corporation with a share capital of €16,000,075 - 18, Rue Hoche, FR-92800 Puteaux - 693 001 091 RCS Nanterre - Exclusive property of Els Group



Your contamination control partner



Every cleanroom is different, your solution should be too. Layouts, processes, and requirements vary, so a one-size-fits-all approach simply doesn't work.

At Elis Cleanroom, we offer two complementary cleaning solutions and guide you in selecting the solution that delivers the right performance for your operations. Because the right choice drives long-term success.

BECAUSE CONTAMINATION CONTROL STARTS AT THE SURFACE.

TWO SYSTEMS. ONE CONTROLLED OUTCOME.

Cleanroom cleaning is not one-size-fits-all.

Depending on your process, cleanroom set-up, contamination risk assessment, operator training level, the optimal solution can differ significantly.

1 PRE-PREPARED SOLUTION ElisMicronsweep™

ElisMicronsweep™ supports efficient cleanroom cleaning by enabling preparation outside the controlled area. This helps reduce movement inside critical zones and maintain stable airflow conditions.

With mops pre-prepared using a defined liquid volume, operators enter the cleanroom with ready-to-use materials and minimal equipment, supporting consistent, controlled performance.



USP'S

- Pre-prepared dosing using a sieve box
- One-Step cleaning
- Minimal equipment required*
- High system flexibility**
- Colour coding for zoning of specific areas
- Suitable for facilities valuing simplicity and adaptability



* Handle + bucket; trolley optional
** Single mop, duo mop, window mop, scrubber

2 BUCKET TROLLEY SOLUTION ElisCleanflow

ElisCleanflow is designed for cleanrooms where consistency, low operator dependency, and strong contamination control are essential. The system doses liquid automatically in the trolley using a precision piston, delivering the exact predefined amount to every mophead, so you achieve reliable, repeatable results with less manual effort.

ElisCleanFlow requires a dedicated type of trolley inside the cleanroom and the presence of cleaning liquid within the controlled area. Validation on contact time should be executed during test run as this differs between cleanrooms due to flooring type, air changes etc.



USP'S

- Touch-free mop handling during cleaning
- Precise, automatic dosing per mop
- Immediate use after 3-seconds
- Low contamination risk due to no human interaction with the mop
- Mopheads manufactured with 76% recycled content*



* CSR contribution

ElisMicronsweep™



ElisCleanflow



1 ELISMICRONSWEP™ WORKFLOW

- 1 Place amount of needed mops in box
- 2 Place sieve onto box
- 3 Pour pre-defined amount of liquid
- 4 Remove sieve and place lid
- 5 Open mop box
- 6 Take mop and place over mop frame
- 7 Start mopping
Cleaning performance:
~20 m² per Single mop
30-40 m² with Duo Mop*
- 8 Discard mop

2 ELISCLEANFLOW WORKFLOW

- 1 Press the trigger in the tray using the mop frame. liquid is automatically pre-dosed.
- 2 Open the mop frame without touching it.
- 3 Pick up the mop without touching it.
- 4 Press the trigger in the tray using the mop frame while simultaneously picking up liquid with the mop. the liquid is pre-dosed again by lifting the mop frame.
- 5 Carry out the wiping process.
Cleaning performance:
Up to 28 m² per mop*
- 6 Drop the mop without touching it and repeat step 3 to 6.

* Depending on environmental circumstances

* Depending on environmental circumstances

FIND THE RIGHT SYSTEM FOR YOUR NEEDS

To support your decision on selecting a cleanroom cleaning system, the following key aspects may be considered:

<p>1 PREPARATION</p> <p>Where do I want to prepare my cleaning materials?</p>	<p>2 DOSING</p> <p>How critical is operator-independent reproducibility?</p>	<p>3 MOP HANDLING</p> <p>How much operator interaction with the mop is acceptable?</p>	<p>4 SIZE CLEANROOM</p> <p>What is the size of the cleanroom?</p>
<p>5 TIME</p> <p>How should time be allocated in the workflow?</p>	<p>6 EQUIPMENT</p> <p>How much equipment could remain inside the cleanroom?</p>	<p>7 ERGONOMICS</p> <p>How would you define the ergonomics per system for your operators?</p>	<p>8 SUSTAINABILITY</p> <p>Is sustainability or recycled content a formal selection criteria?</p>

By reflecting on these aspects it will become more clear which cleaning solution aligns best with your cleanroom processes. Because every cleanroom is unique, we recommend an on-site assessment to identify the optimal solution for your operation.

Our two solutions serve different cleanroom strategies.

If one isn't the right fit, the other probably is.



Scan QR code
Ask for more Cleanroom information

COMPLIANCE BUILT INTO THE PROCESS

- ISO 14644-5 and EU GMP EudraLex Annex 1 require effective cleaning before disinfection.
- Proper cleaning is the critical first step in contamination control.
- The purpose of a cleanroom is to enable reliable production in a fully controlled environment.
- Meeting Annex 1 requirements demands the right tools, proven techniques, and disciplined execution at every stage.

Our cleanroom expertise helps you determine which system to use for your specific cleanroom and needs.

KEY ELEMENTS OF AN EFFECTIVE CLEANING SYSTEM



APPROPRIATE
CLEANING
MATERIALS



SYSTEM-BASED
DESIGN



CONTROLLED
REUSE



PROFESSIONAL
LAUNDERING AND
MAINTENANCE

Our expert whitepapers break down key considerations for cleanroom cleaning and help you evaluate which cleaning system best supports your contamination control strategy.

Download, learn, and elevate your cleanroom performance.



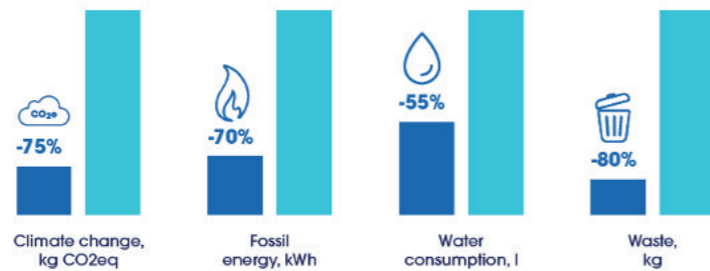
Scan QR code

WHY THROW AWAY CLEANING PERFORMANCE?

Elis Cleanroom has commissioned a comparative LCA (Life Cycle Assessment), evaluating the environmental impacts of reusable versus single-use cleanroom mops and wipes throughout their life cycle in cleanroom settings. Findings from the study indicate that reusable mops/wipes **show superior performance compared to single-use in all 16 impact areas evaluated.**

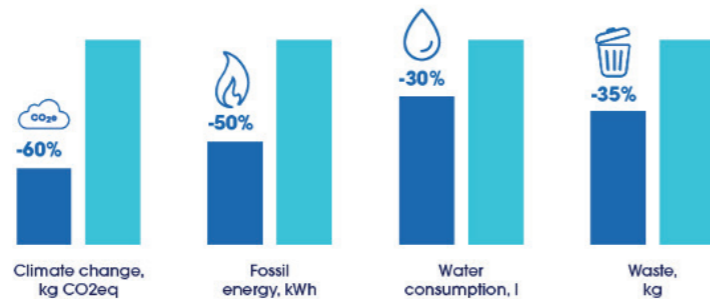
Choosing a reusable cleanroom mops solution reduces the carbon footprint by more than 75 %

■ Average reusable mop
■ Single-use mop



Choosing a reusable cleanroom wipes solution reduces the carbon footprint by more than 60 %

■ Average reusable wipe
■ Single-use mop



Moreover, one reusable mop replaces approximately 100 single-use mops over its lifetime (based on surface coverage of single-use mops). This helps reduce waste generation from single-use products by 80%.

1 REUSABLE MOP



100 SINGLE-USE MOPS



Want to calculate how much you could save by switching from single-use to reusable mops? [Scan the QR code!](#)



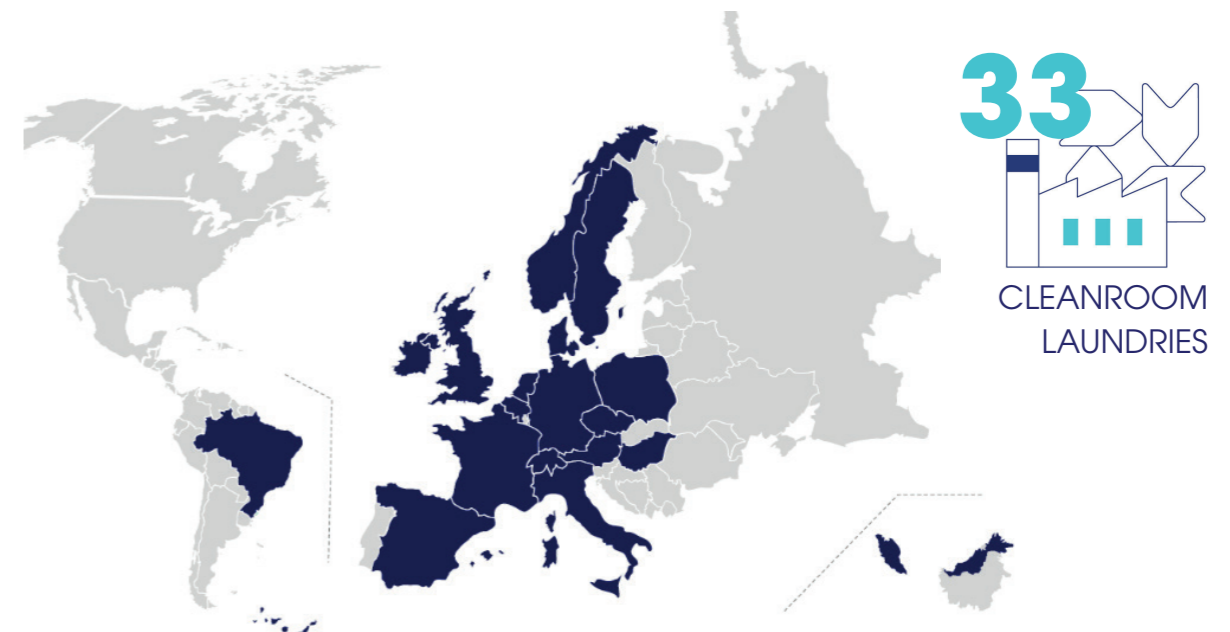
Finally, choosing reusable cleanroom cleaning solution over a single-use alternative can contribute to achieving your climate targets by **reducing your Scope 3 emissions** (compared with single-use alternatives).

ELIS CLEANROOM, YOUR CONTAMINATION CONTROL PARTNER

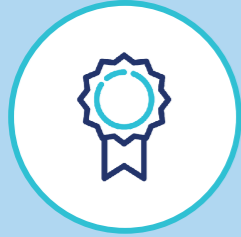
With our specialised cleanroom laundry service, your mops return **clean, controlled, and ready to perform.** Every step—from washing to packaging—is carefully managed to support your contamination control strategy.



An optimal cleanroom contamination control solution is essential for every company operating in a cleanroom environment. We provide **360° cleanroom contamination control solutions for our customers.** **With decades of experience within the cleanroom industry,** we are the optimal partner for you!



YOUR BENEFITS CHOOSING ELIS CLEANROOM



GUARANTEED QUALITY

- Continuous monitoring
- Pre-defined testing
- Internal and external audits
- Certified cleanrooms (ISO Class 4 and 7 at rest / Grade A/B and Grade C/D)



FULL SERVICE

- We offer flexibility and advice.
- Full traceability through our online management portal ElisConnect.



SECURITY OF DELIVERY

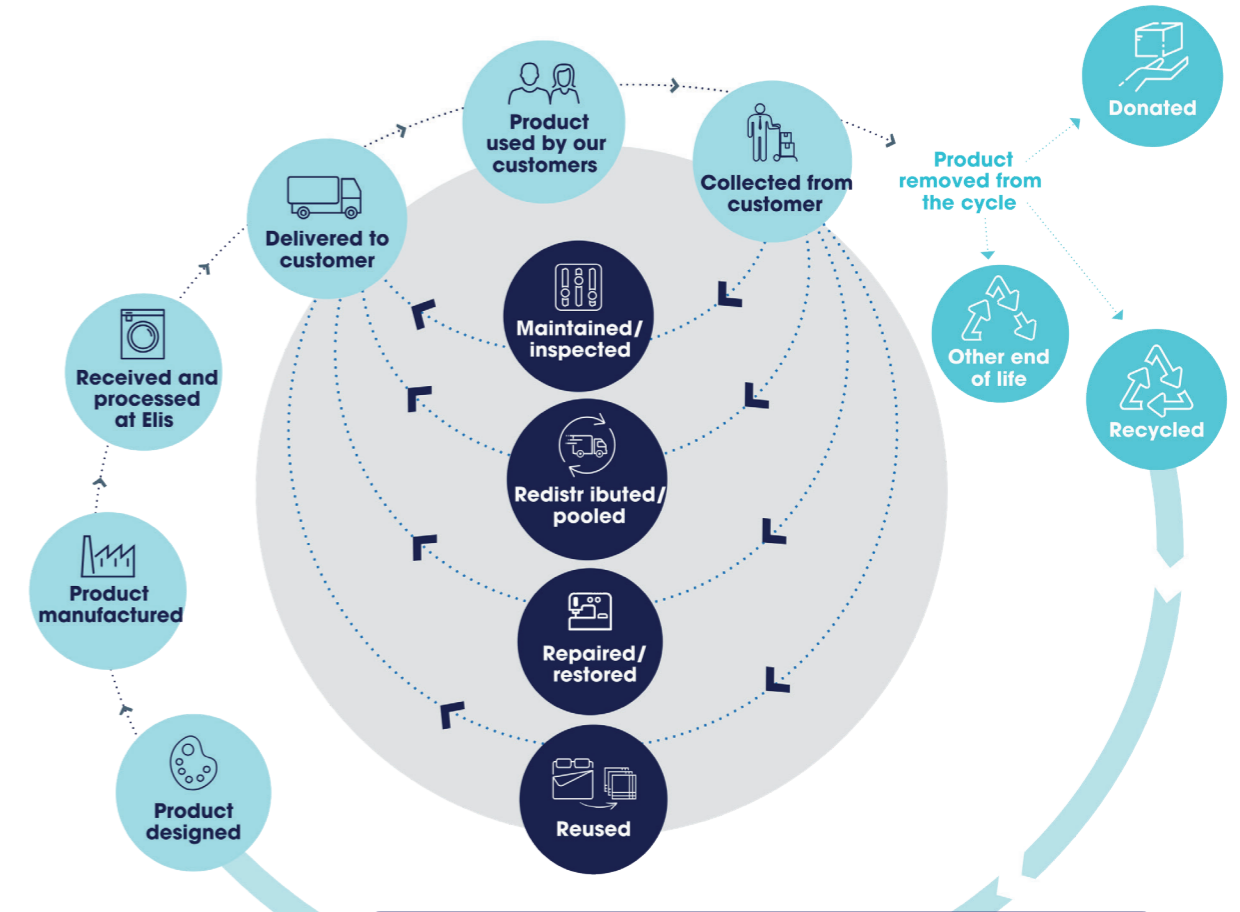
- We manage our own vehicle fleet with trained permanent drivers.
- Contingency plan throughout our 33 cleanroom decontamination units.



QUALIFIED DOCUMENTATION

- We document everything we do; following GMP regulations and in accordance with the industry standards.

Entrust your controlled environment into our care, let us handle everything regarding purchase, stock, decontamination, replacement, maintenance and delivery of our cleanroom solutions, so you can concentrate on what you do best – your core business.



OUR CIRCULAR SERVICES MODEL

Our business model is based on a circular product as service model and emphasises services over products and rentals over purchases. The service model works in “loops” ensuring our reusable cleanroom garments and accessories stay in circulation for as long as possible. This is enabled by maintaining, pooling, repairing and reusing garments along the way.

Finally, end-of-life cleanroom textiles are given a new life by reuse or recycling.